



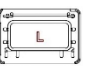
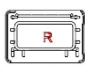




■ Know Your Shade

Number of parts included for each shade:

Shade width	Brackets	Screws	Bottom Handle	Middle Handle
W ≤ 38"	2	4	1	1
W > 38"	3	6	2	2

2 Headrail endcaps,
2 Bottomrail endcaps,
2 Middlerail endcaps

- Bracket 
 - Hex-Head Screw 
 - Bottom Handle 
 - Middle Handle 
 - 2 Headrail End Caps
- Left side:  Right Side: 
- 2 Bottomrail End Caps 
 - 2 Middlerail End Caps 

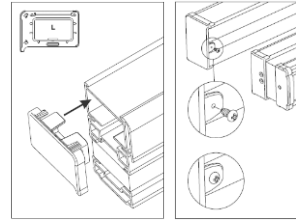
■ Prepping the Shade

If endcaps are already installed, skip this step.

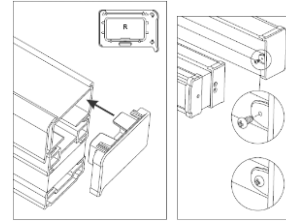
Remove the wrap and install the headrail endcaps, middlerail endcaps and bottomrail endcaps.

Fasten the top cell and stiffener to headrail endcaps

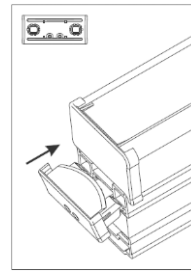
Headrail Left Side:



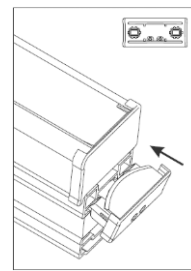
Headrail Right Side:



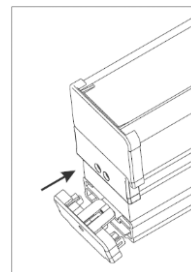
Midrail Left Side:



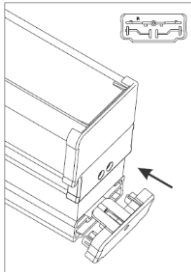
Midrail Right Side:



Bottomrail Left Side:



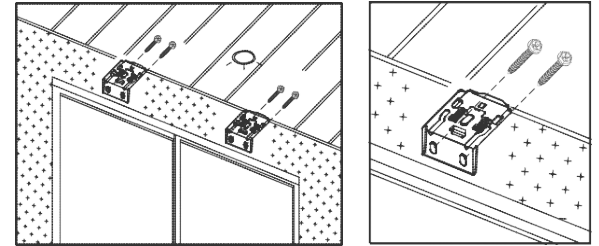
Bottomrail Right Side:



■ Outside Mount

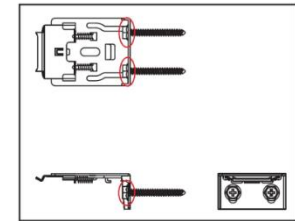
Position brackets above window opening. Remember to leave the brackets few inches away from each side of

your window. Spread them out evenly by having same distance from each side of the window.



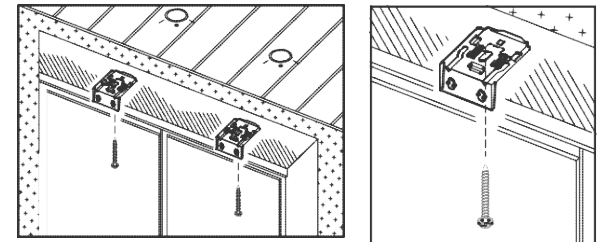
Make sure brackets are aligned. "L" shape opening should be facing down, with shorter side against the wall.

Insert 2 hex-head screws into both openings and fasten.



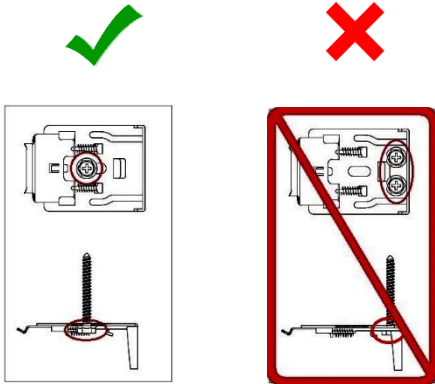
■ Inside Mount

Position brackets along the top of the window opening in the desired location. Remember to leave few inches away from each side of your window.



Make sure both brackets are aligned. "L" shape opening should be facing down, with longer side against top of the window opening.

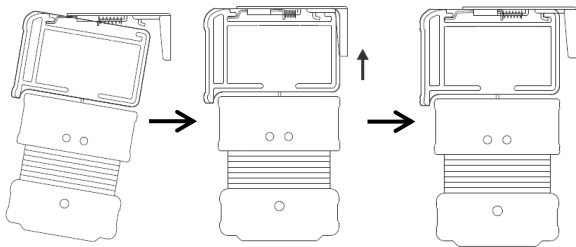
Insert 1 hex-head screws into oval opening, between 2 springs, and fasten.



DO NOT use hex-head screws for holes on the back of the bracket for inside mount. It will prevent your shade from clicking in place. These holes can be operated with 2 flat-head screws (Flat-head screws are not included in the package).

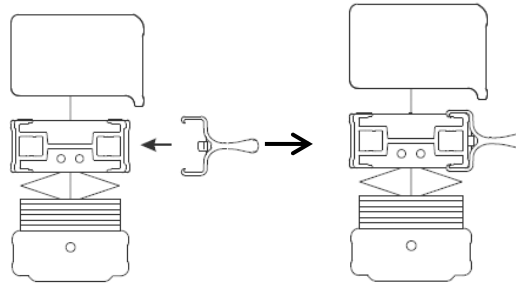
■ Mount Shade on Brackets

Install the head rail by hooking the front of the bracket and push shade towards back of brackets, in a rolling motion, until clicks in place.

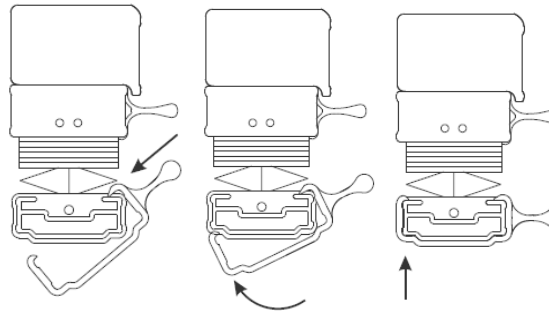


■ Installing Handle

1. Install midrail handle



2. Install bottomrail handle



For shades $W \leq 38''$, single cordless handles should be operated from the center of midrail and bottomrail.

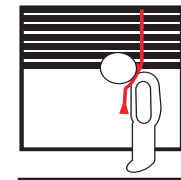
For shades $38'' < W \leq 72''$, spread handles out evenly by having the same distance from each side of the window.

To insure proper usage of cordless shades, be sure to extend and retract shade steadily assuring the cord to stack evenly.

**Please allow 24 hours for your shade to drop to its actual height when first installed due to the nature of the fabric.

CORDLESS TOP DOWN BOTTOM UP CELLULAR SHADE INSTALLATION INSTRUCTIONS

**! WARNING/
ADVERTENCIA**



Window blind cord can **STRANGLE** your child. To prevent strangulation, purchase cordless products or products with inaccessible cords.

La cuerda de la persiana puede **ESTRANGULAR** a su niño.
Para evitar el estrangulamiento, compre alternativas cuerda o productos con cuerdas inaccesibles.